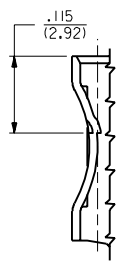
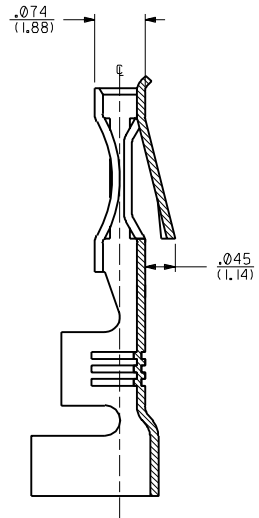
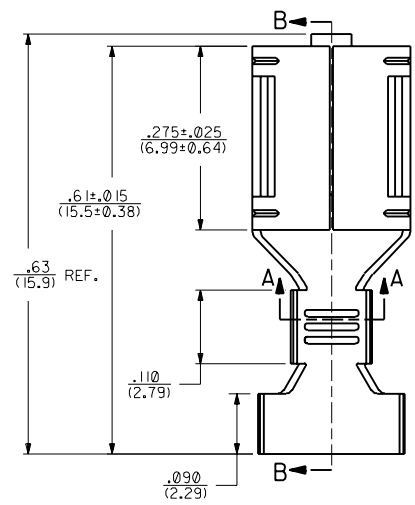
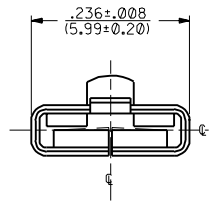
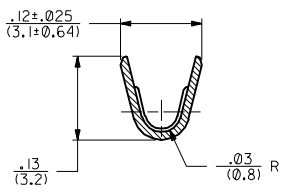
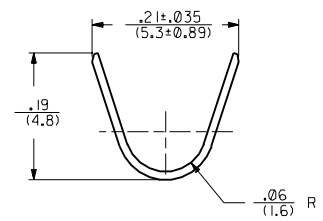


PART NO.	ENG. NO.	DESCRIPTION
05-06-0301	2176-T	TIN PLATE
05-06-0303	2176-AT	WITHOUT DETENT, TIN PLATED
NOT TOOLED	X-2176-999A	WITHOUT DETENT, UNPLATED
05-06-0302	2176-(P90)IL	WITH DETENT, PLATED, LOOSE
05-06-0304	2176-(P90)IAL	WITHOUT DETENT, PLATED, LOOSE



DETENT LOCATION
SCALE 8:1

- NOTES:
1. CRIMP FOR #14 THRU #22 GA. WIRE, ALSO (2) #18 GA. WIRE WITH .03(0.79) THK. INSULATION.
 2. MATERIAL: .010/(0.25) THK. 70/30 BRASS ALLOY, PRE-TIN PLATED.
 3. PRODUCT SPECIFICATION 05-06-1 APPLIES.



SECTION A-A
SCALE 8:1

E	REVISIONS
1	REDRAWN ON CAD PER UCR2000-0804 00/07/13 ES

DIMENSIONS SHOWN METRIC (INCH)		UNLESS OTHERWISE SPECIFIED TOLERANCES ANGULAR ± 1/2°		MFG. SH. REV. LTR. REVISIONS		REVISE ONLY ON CAD SYSTEM	
INCH	METRIC	TITLE				TERMINAL FOR .020/(0.51) X .187/(4.75) SPADE	
3 PLACE ± .010	---	PART NO.				MOLEX INCORPORATED	
2 PLACE ± .014	± 0.25	L15LEJLL				SHEET NO. DATE	
1 PLACE ---	± 0.35	69532				1 OF 1 92/10/26	
DRAFT WHERE APPLICABLE MUST REMAIN WITHIN DIMENSIONS		SEE CHART				SD-2176-*	
DRWG. BY: MAB	CHKD. BY: KBP	FILE NAME: SD2176X1.DWG				DIV. SIZE	
APP'D. BY: RAS	SCALE: 8:1	THIS DRAWING CONTAINS INFORMATION THAT IS PROPRIETARY TO MOLEX INC. AND SHOULD NOT BE USED WITHOUT WRITTEN PERMISSION.				CP C	